

STANDARD ARRIVAL  
CHART - INSTRUMENT  
(STAR) - ICAO

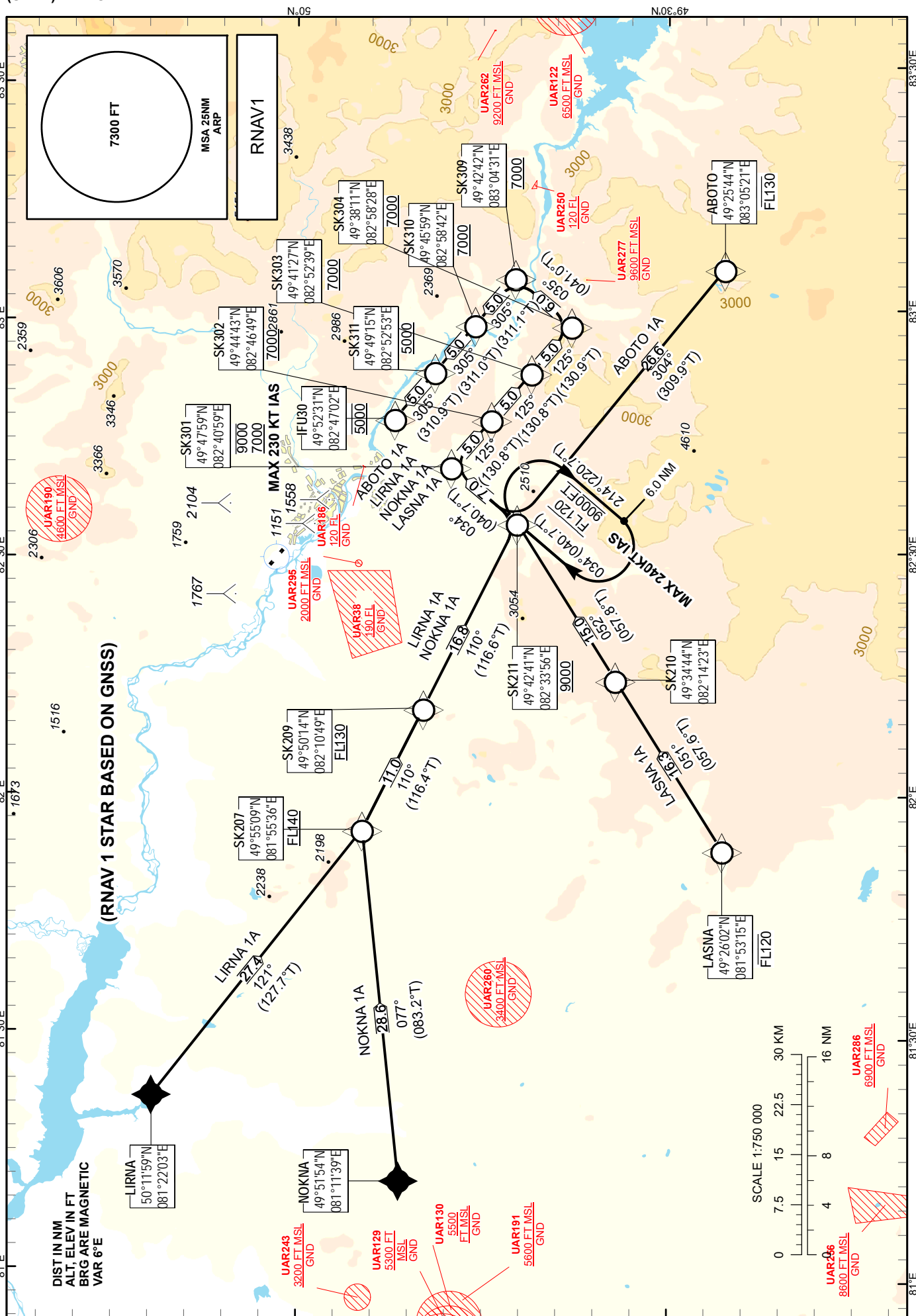
TRANSITION ALTITUDE  
10000 FT

UST-KAMENOGORSK TOWER 130.1  
UST-KAMENOGORSK ATIS (EN) 124.2  
UST-KAMENOGORSK ATIS (RU) 127.7

ABOTO 1A, LASNA 1A,  
LIRNA 1A, NOKNA 1A

UST-KAMENOGORSK  
RWY 30

CHANGE: Editorial.



TABULAR DESCRIPTION

Serial Number	Path Descriptor	Waypoint Identifier	Fly - over	Course °M(°T)	Magnetic Variation(°)	Distance NM	Turn Direction	Altitude FT	Speed KT	VPA (°)	Navigation Specification
ABOTO 1A											
10	IF	ABOTO	-	-	+6.3	-	-	-FL130	-	-	RNAV 1
20	TF	SK211	-	304(309.9)	+6.3	26.6	R	+9000	-	-1.8	RNAV 1
30	TF	SK301	-	034(40.7)	+6.3	7.0	R	+7000/-9000	-230	-2.7	RNAV 1
40	TF	SK302	-	125(130.8)	+6.3	5.0	R	+7000	-	0	RNAV 1
50	TF	SK303	-	125(130.8)	+6.3	5.0	-	+7000	-	0	RNAV 1
60	TF	SK304	-	125(130.9)	+6.3	5.0	-	+7000	-	0	RNAV 1
70	TF	SK309	-	035(041)	+6.3	6.0	L	+7000	-	0	RNAV 1
80	TF	SK310	-	305(311.1)	+6.3	5.0	L	+7000	-	0	RNAV 1
90	TF	SK311	-	305(311)	+6.3	5.0	-	+5000	-	0	RNAV 1
100	TF	IFU30	-	305(310.9)	+6.3	5.0	-	@5000	-	-3.8	RNAV 1
LASNA 1A											
10	IF	LASNA	-	-	+6.3	-	-	-FL120	-	-	RNAV 1
20	TF	SK210	-	051(57.6)	+6.3	16.3	L	-	-	-1.2	RNAV 1
30	TF	SK211	-	052(57.8)	+6.3	15.0	-	+9000	-	-2.5	RNAV 1
40	TF	SK301	-	034(40.7)	+6.3	7.0	L	+7000/-9000	-230	-2.7	RNAV 1
50	TF	SK302	-	125(130.8)	+6.3	5.0	R	+7000	-	0	RNAV 1
60	TF	SK303	-	125(130.8)	+6.3	5.0	-	+7000	-	0	RNAV 1
70	TF	SK304	-	125(130.9)	+6.3	5.0	-	+7000	-	0	RNAV 1
80	TF	SK309	-	035(041)	+6.3	6.0	L	+7000	-	0	RNAV 1
90	TF	SK310	-	305(311.1)	+6.3	5.0	L	+7000	-	0	RNAV 1
100	TF	SK311	-	305(311)	+6.3	5.0	-	+5000	-	0	RNAV 1
110	TF	IFU30	-	305(310.9)	+6.3	5.0	-	@5000	-	-3.8	RNAV 1
LIRNA 1A											
10	IF	LIRNA	-	-	+6.3	-	-	-	-	-	RNAV 1
20	TF	SK207	-	121(127.7)	+6.3	27.4	L	+FL140	-	-2.4	RNAV 1
30	TF	SK209	-	110(116.4)	+6.3	11.0	L	+FL130	-	-2.6	RNAV 1
40	TF	SK211	-	110(116.6)	+6.3	16.8	-	+9000	-	-0.6	RNAV 1
50	TF	SK301	-	034(40.7)	+6.3	7.0	L	+7000/-9000	-230	-2.7	RNAV 1
60	TF	SK302	-	125(130.8)	+6.3	5.0	R	+7000	-	0	RNAV 1
70	TF	SK303	-	125(130.8)	+6.3	5.0	-	+7000	-	0	RNAV 1
80	TF	SK304	-	125(130.9)	+6.3	5.0	-	+7000	-	0	RNAV 1
90	TF	SK309	-	035(041)	+6.3	6.0	L	+7000	-	0	RNAV 1
100	TF	SK310	-	305(311.1)	+6.3	5.0	L	+7000	-	0	RNAV 1
110	TF	SK311	-	305(311)	+6.3	5.0	-	+5000	-	0	RNAV 1
120	TF	IFU30	-	305(310.9)	+6.3	5.0	-	@5000	-	-3.8	RNAV 1
NOKNA 1A											
10	IF	NOKNA	-	-	+6.3	-	-	-	-	-	RNAV 1
20	TF	SK207	-	077(83.2)	+6.3	28.6	L	+FL140	-	-2.3	RNAV 1
30	TF	SK209	-	110(116.4)	+6.3	11.0	R	+FL130	-	-2.6	RNAV 1
40	TF	SK211	-	110(116.6)	+6.3	16.8	-	+9000	-	-0.6	RNAV 1
50	TF	SK301	-	034(40.7)	+6.3	7.0	L	+7000/-9000	-230	-2.7	RNAV 1
60	TF	SK302	-	125(130.8)	+6.3	5.0	R	+7000	-	0	RNAV 1
70	TF	SK303	-	125(130.8)	+6.3	5.0	-	+7000	-	0	RNAV 1
80	TF	SK304	-	125(130.9)	+6.3	5.0	-	+7000	-	0	RNAV 1
90	TF	SK309	-	035(041)	+6.3	6.0	L	+7000	-	0	RNAV 1
100	TF	SK310	-	305(311.1)	+6.3	5.0	L	+7000	-	0	RNAV 1
110	TF	SK311	-	305(311)	+6.3	5.0	-	+5000	-	0	RNAV 1
120	TF	IFU30	-	305(310.9)	+6.3	5.0	-	@5000	-	-3.8	RNAV 1

WAYPOINT LIST

ABOTO 1A	
Waypoint Identifier	Coordinates
ABOTO	492544.00N 0830521.00E
SK211	494241.09N 0823356.37E
SK301	494759.16N 0824058.81E
SK302	494443.34N 0824649.17E
SK303	494127.23N 0825238.75E
SK304	493810.82N 0825827.54E
SK309	494242.20N 0830431.27E
SK310	494558.91N 0825842.34E
SK311	494915.32N 0825252.63E
IFU30	495231.44N 0824702.13E
LASNA 1A	
Waypoint Identifier	Coordinates
LASNA	492602.00N 0815315.00E
SK210	493443.97N 0821422.65E
SK211	494241.09N 0823356.37E
SK301	494759.16N 0824058.81E
SK302	494443.34N 0824649.17E
SK303	494127.23N 0825238.75E
SK304	493810.82N 0825827.54E
SK309	494242.20N 0830431.27E
SK310	494558.91N 0825842.34E
SK311	494915.32N 0825252.63E
IFU30	495231.44N 0824702.13E

LIRNA 1A	
Waypoint Identifier	Coordinates
LIRNA	501159.00N 0812203.00E
SK207	495508.92N 0815535.81E
SK209	495014.45N 0821048.75E
SK211	494241.09N 0823356.37E
SK301	494759.16N 0824058.81E
SK302	494443.34N 0824649.17E
SK303	494127.23N 0825238.75E
SK304	493810.82N 0825827.54E
SK309	494242.20N 0830431.27E
SK310	494558.91N 0825842.34E
SK311	494915.32N 0825252.63E
IFU30	495231.44N 0824702.13E
NOKNA 1A	
Waypoint Identifier	Coordinates
NOKNA	495154.00N 0811139.00E
SK207	495508.92N 0815535.81E
SK209	495014.45N 0821048.75E
SK211	494241.09N 0823356.37E
SK301	494759.16N 0824058.81E
SK302	494443.34N 0824649.17E
SK303	494127.23N 0825238.75E
SK304	493810.82N 0825827.54E
SK309	494242.20N 0830431.27E
SK310	494558.91N 0825842.34E
SK311	494915.32N 0825252.63E
IFU30	495231.44N 0824702.13E